



**OFFICE, PRINCIPAL GOVERNMENT TULSI COLLEGE, ANUPPUR**

**Affiliated to Awadhesh Pratap Singh University Rewa (MP)**

Registered Under Section 2 (F) & 12 (B) of UGC Act

E-mail: [hegtdcano@mp.gov.in](mailto:hegtdcano@mp.gov.in)



9893076404

**Old Computer Lab**



  
PRINCIPAL  
Govt. Tulsi College Anuppur  
Distt. Anuppur (M.P.)



# OFFICE, PRINCIPAL GOVERNMENT TULSI COLLEGE, ANUPPUR

Affiliated to Awadhesh Pratap Singh University Rewa (MP)

Registered Under Section 2 (F) & 12 (B) of UGC Act

E-mail: [hegtdcano@mp.gov.in](mailto:hegtdcano@mp.gov.in)



9893076404



  
PRINCIPAL  
Govt. Tulsi College Anuppur  
Dist. Anuppur (M.P.)



## OFFICE, PRINCIPAL GOVERNMENT TULSI COLLEGE, ANUPPUR

Affiliated to Awadhesh Pratap Singh University Rewa (MP)

Registered Under Section 2 (F) & 12 (B) of UGC Act

E-mail: [hegtdcano@mp.gov.in](mailto:hegtdcano@mp.gov.in)



9893076404



 GPS Map Camera

**Kusmahai, Madhya Pradesh, India**

4P67+FGG, Amarkantak Rd, Kusmahai, Madhya Pradesh

484224, India

Lat 23.111207°

Long 81.713708°

25/01/23 12:44 PM GMT +05:30

Google

  
PRINCIPAL  
Govt. Tulsi College Anuppur  
Distt. Anuppur (M.P.)



## OFFICE, PRINCIPAL GOVERNMENT TULSI COLLEGE, ANUPPUR

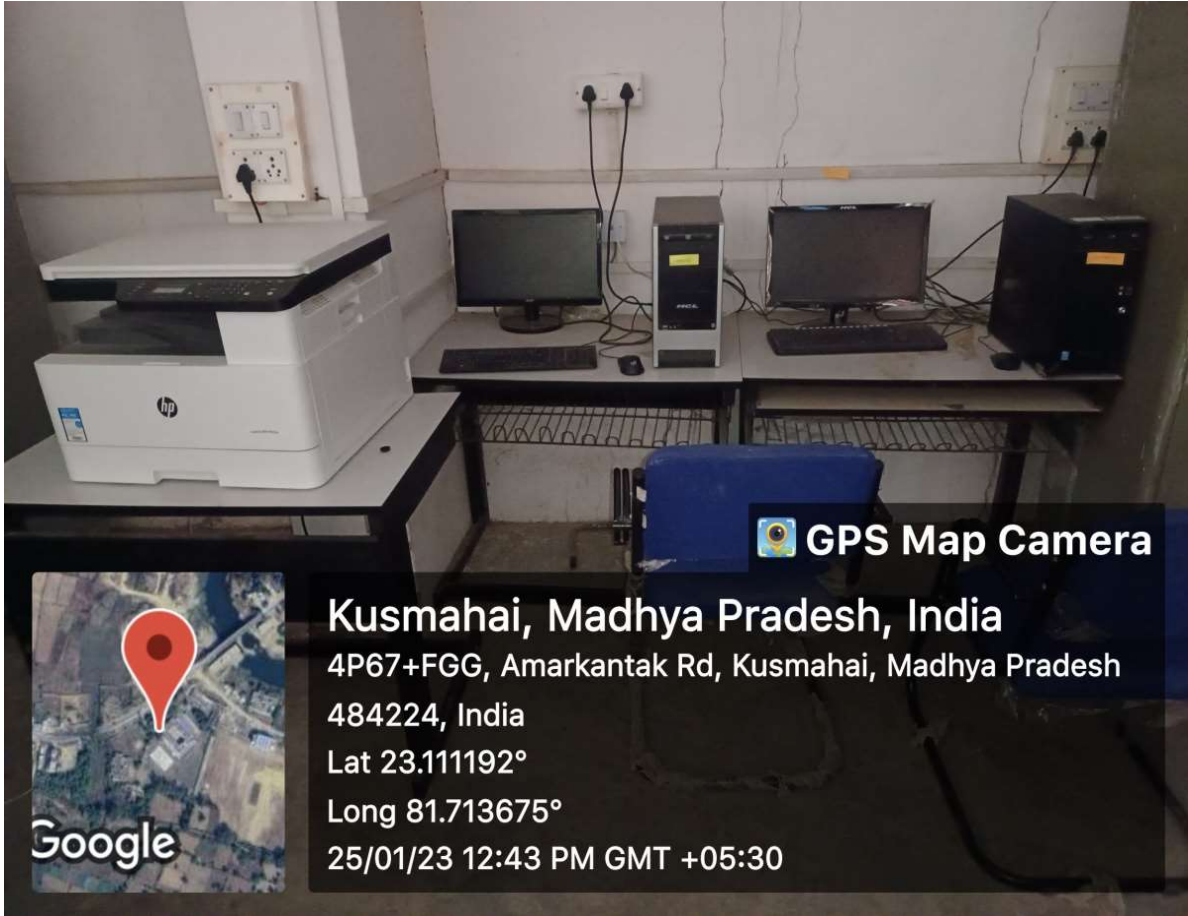
Affiliated to Awadhesh Pratap Singh University Rewa (MP)


Registered Under Section 2 (F) & 12 (B) of UGC Act

E-mail: [hegtdcano@mp.gov.in](mailto:hegtdcano@mp.gov.in)



9893076404



  
PRINCIPAL  
Govt. Tulsi College Anuppur  
Distt. Anuppur (M.P.)



**OFFICE, PRINCIPAL GOVERNMENT TULSI COLLEGE, ANUPPUR**

**Affiliated to Awadhesh Pratap Singh University Rewa (MP)**


Registered Under Section 2 (F) & 12 (B) of UGC Act

E-mail: [hegtdcano@mp.gov.in](mailto:hegtdcano@mp.gov.in)



9893076404



  
PRINCIPAL  
Govt. Tulsi College Anuppur  
Distt. Anuppur (M.P.)



## OFFICE, PRINCIPAL GOVERNMENT TULSI COLLEGE, ANUPPUR

Affiliated to Awadhesh Pratap Singh University Rewa (MP)

Registered Under Section 2 (F) & 12 (B) of UGC Act

E-mail: [hegtdcano@mp.gov.in](mailto:hegtdcano@mp.gov.in)



9893076404



  
PRINCIPAL  
Govt. Tulsi College Anuppur  
Distt. Anuppur (M.P.)



# OFFICE, PRINCIPAL GOVERNMENT TULSI COLLEGE, ANUPPUR

Affiliated to Awadhesh Pratap Singh University Rewa (MP)

Registered Under Section 2 (F) & 12 (B) of UGC Act

E-mail: [hegtdcano@mp.gov.in](mailto:hegtdcano@mp.gov.in)



9893076404



  
PRINCIPAL  
Govt. Tulsi College Anuppur  
Distt. Anuppur (M.P.)



# OFFICE, PRINCIPAL GOVERNMENT TULSI COLLEGE, ANUPPUR

Affiliated to Awadhesh Pratap Singh University Rewa (MP)

Registered Under Section 2 (F) & 12 (B) of UGC Act

E-mail: [hegtdcano@mp.gov.in](mailto:hegtdcano@mp.gov.in)



9893076404

## IT Facilities

This document gives details about the hardware and software ICT facilities available in the college .

### Record of Hardware IT Facilities

S.No.	Place	No. of Desktops	Printers	Projectors	LCD/ Int. Smart Panel	operating system	office
1	Computer Lab.	4	2	-	-	windows 2019 pro, windows 2021 pro	MS office 365
2	Scholarship Dept.	2	2	-	-	windows 10 pro	MS office 2010
3	Account Section	1	1	-	-	window 10 pro	MS office 2007
4	Principal Office	1	2	-	1	windows 2021 pro	MS office 2021
5	IQAC Office	4	3	-	-	windows 7,10, 11 pro	MS office 2007,2010, 2016,2019
6	E Library	24	3	-	-	windows 7, 10,2016, 2019 pro	MS office 2007,2010, 2011, 2021
7	Room No. 16 (virtual Class)	-	-	1	1	windows 7 pro	MS office 2007
8	Room No. 18 (Smart Class)	-	-	1	-	windows 7 pro	MS office 2007
9	Room No. 25 (Smart Class)	-	-	1	-	windows 7 pro	MS office 2007
10	Room No. 27 (Confrence Hall)	-	-	1	-	windows 7 pro	MS office 2007

  
PRINCIPAL  
Govt. Tulsi College Anuppur  
Distt. Anuppur (M.P.)





# OFFICE, PRINCIPAL GOVERNMENT TULSI COLLEGE, ANUPPUR

Affiliated to Awadhesh Pratap Singh University Rewa (MP)

Registered Under Section 2 (F) & 12 (B) of UGC Act

E-mail: [hegtdcano@mp.gov.in](mailto:hegtdcano@mp.gov.in)



9893076404

11	Room No. 4 (Int. Smart Panel)	-	-	-	1	windows 2021 pro	MS office 2021
12	Room No. 12 (Int. Smart Panel)	-	-	-	1	windows 2021 pro	MS office 2021
13	Room No. 17 (Int. Smart Panel)	-	-	-	1	windows 2021 pro	MS office 2021
14	Lab. Building Hall (Int. Smart Panel)	-	-	-	1	windows 2021 pro	MS office 2021

  
PRINCIPAL  
Govt. Tulsi College Anuppur  
Distt. Anuppur (M.P.)



# OFFICE, PRINCIPAL GOVERNMENT TULSI COLLEGE, ANUPPUR

Affiliated to Awadhesh Pratap Singh University Rewa (MP)

Registered Under Section 2 (F) & 12 (B) of UGC Act

E-mail: [hegtdcano@mp.gov.in](mailto:hegtdcano@mp.gov.in)



9893076404

## New Computer Lab



  
PRINCIPAL  
Govt. Tulsi College Anuppur  
Distt. Anuppur (M.P.)

Jaithari Road Anuppur, District- Anuppur, Madhya Pradesh, Pin Code:- 484224 [www.gtcanuppur.ac.in](http://www.gtcanuppur.ac.in)



# OFFICE, PRINCIPAL GOVERNMENT TULSI COLLEGE, ANUPPUR

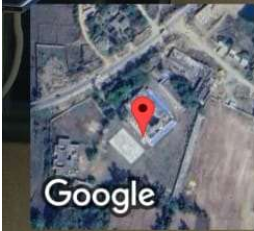
Affiliated to Awadhesh Pratap Singh University Rewa (MP)

Registered Under Section 2 (F) & 12 (B) of UGC Act

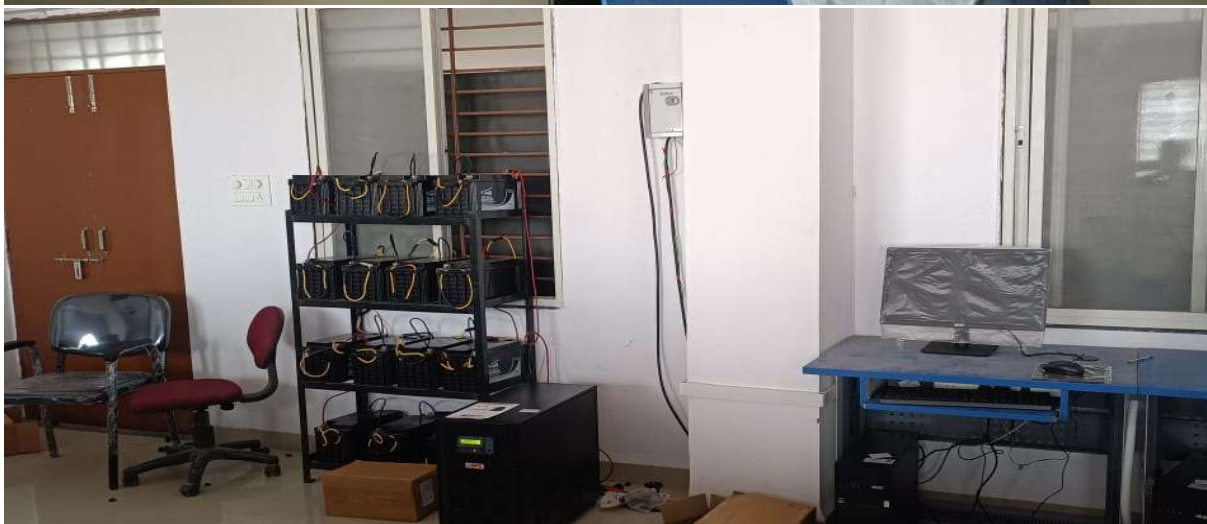
E-mail: [hegtdcano@mp.gov.in](mailto:hegtdcano@mp.gov.in)




9893076404



Kusmahai, Madhya Pradesh, India  
4P67+FGG, Kusmahai, Madhya Pradesh 484224, India  
Lat 23.111132°  
Long 81.713936°  
12/06/24 01:36 PM GMT +05:30



  
PRINCIPAL  
Govt. Tulsi College Anuppur  
Distt. Anuppur (M.P.)